



Build Enduring Relationships

INTRODUCING GOLDMINE MOBILE 2014 YOUR MOBILE CRM SOLUTION - ANYWHERE, ANYTIME

Working with your GoldMine Premium Edition, manage and maintain your key business relationships remotely with GoldMine Mobile.

Add GoldMine Mobile For Your Smartphones Or Tablets To:

- View and edit your contact information
- Manage your activity list
- Update sales opportunities and customer service cases
- Assign tasks to other GoldMine users
- Display GoldMine appointments in the local device calendar (requires a Google Apps Business Account)

Easy to Use - With Just a Touch You Can:

- Send and receive linked emails
- See contact and activity details with just a swipe
- Open a map to get to your next visit
- Call a contact



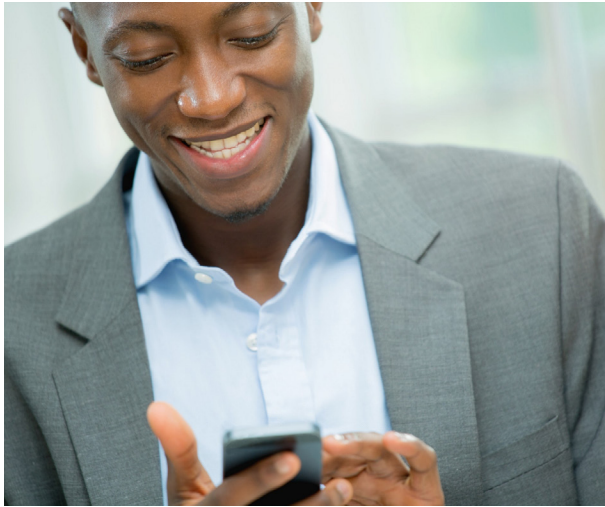
GoldMine is a leading customer relationship management (CRM) provider for Windows-based businesses. Whether the size of your business is small, medium or large, we have a solution for every stage of your company's growth.

GoldMine® Mobile Edition

Insight | Knowledge | Results

GoldMine Mobile for Android & iOS

Using your iPhone, iPad, and now Android tablet or smartphone, our intuitive interface allows users to manage sales forecasts real-time.



In your hands...

- GoldMine Mobile delivers an easy to use integrated application with touch screen navigation to the information they need to be productive. With touch to dial and email, its easy to communicate and one swipe reveals important details.

In the office...

- Your GoldMine Premium Edition will be the central repository of all prospects and customer information. Your marketing, sales, and customer service teams will have what they need to follow up on new business and manage sales opportunities.

On the move...

- GoldMine Mobile Edition puts contact details, daily activities, as well as sales and service information, providing your mobile employees with instant access to vital information and real time sharing for those back in the office.

Empower Your Workforce with Mobility

- Instant access to contacts, forecasts and customer service information
- Plan your schedule, be reminded of appointments and update your activity list
- Receive real time leads
- Receive SMS alerts from GoldMine in the office

Log Contacts and Track

- Attach time-stamped notes of phone conversations, meetings and ideas, and view histories and activities for any contact

Rich User Interface

- Intuitive user interface supports standard touchscreen gestures for easy navigation

Real-Time Wireless Connection

- Wireless access to data enables the mobile workforce to view, retrieve, and update contact information



Customer Service Application

- Provide field service staff with instant access to customer, case and service activities

Security

- Works with your secure server
- Respects all GoldMine user security settings
- No data is stored on the device

Manage Revenue Related Activities

- Help manage and identify forecasted sales, increase sales productivity and drive additional revenue
- Receive SMS text messages from GoldMine

GoldMine Works With Your Environment:

- GoldMine Premium Edition 2014 or later
 - Mobile Edition for smartphone access and iGoldMine for thin client require IIS 7 or 8
 - Apple iOS 4 through 7 or Android devices OS2.3 or higher
 - Mobile users require an available Premium Edition license
- Visit goldmine.com for detailed system requirements

GoldMine
Build Enduring Relationships

Call +44 (0)1635 516700
SPEAK TO A REPRESENTATIVE TODAY
WWW.GOLDMINE.COM

Benyon House
Newbury Business Park
Newbury, RG14 2PZ